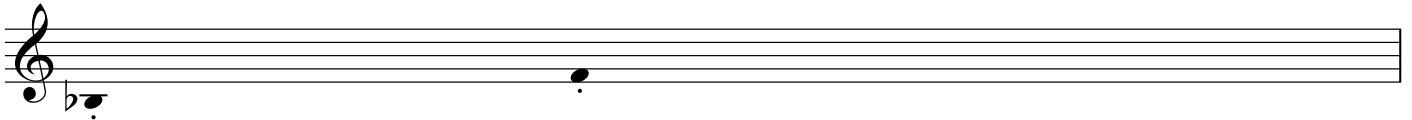


ONE

LUME Kestrel

Eb

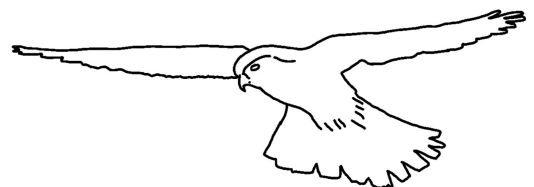
Very quiet improvisation, see how quiet you can make your sounds and still contribute.
Gradually incorporate/focus on these notes. Short, to form a collective melody.
Try to place your note(s) in sequence with someone else, without them knowing. (eg always follow Tullis)



One player decides to move on once most of the band are obviously focussing on their two pitches.
Start the melody. Play it how you feel.
Other players join the melody.
Then gradually add in the other parts one by one.
The first line is the most important one.
Feel free to improvise around the notes, but keep the line present.

A musical score for four staves, all in treble clef with a key signature of one flat (Bb). The score is enclosed in a large rectangular frame. Above the staves, there are four pairs of commas (',') indicating the timing of when each staff begins to play. The first staff starts with a melodic line. The second staff enters with a sustained note. The third staff enters with a melodic line. The fourth staff enters with a melodic line. The score concludes with repeat signs (double dots) at the end of each staff.

Dissolve to original two note phrase (or any other consecutive two notes from above) and end.



Kestrel

THREE

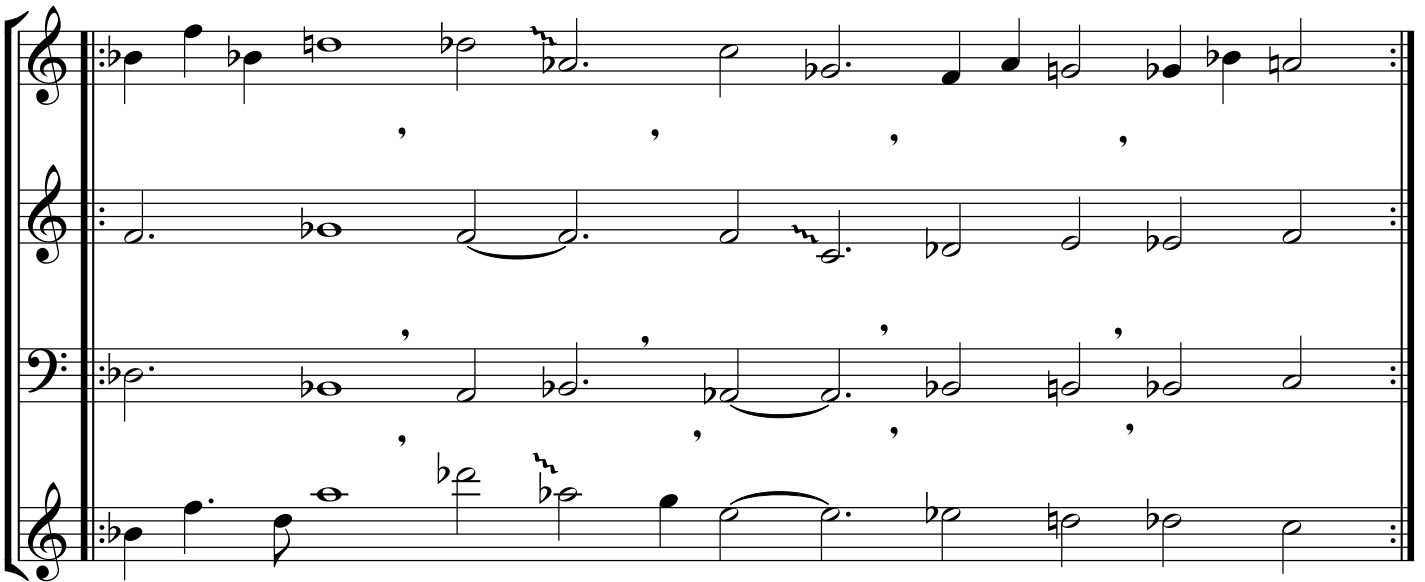
LUME Kestrel

Eb

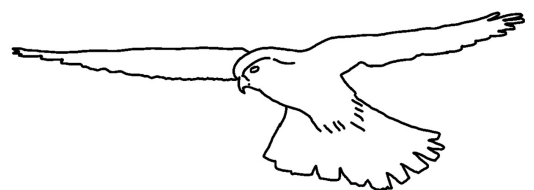
Very quiet improvisation, see how quiet you can make your sounds and still contribute.
Gradually incorporate/focus on these notes. Short, to form a collective melody.
Try to place your note(s) in sequence with someone else, without them knowing. (eg always follow Tullis)



One player decides to move on once most of the band are obviously focussing on their two pitches.
Start the melody. Play it how you feel.
Other players join the melody.
Then gradually add in the other parts one by one.
The first line is the most important one.
Feel free to improvise around the notes, but keep the line present.



Dissolve to original two note phrase (or any other consecutive two notes from above) and end.



Kestrel

FOUR

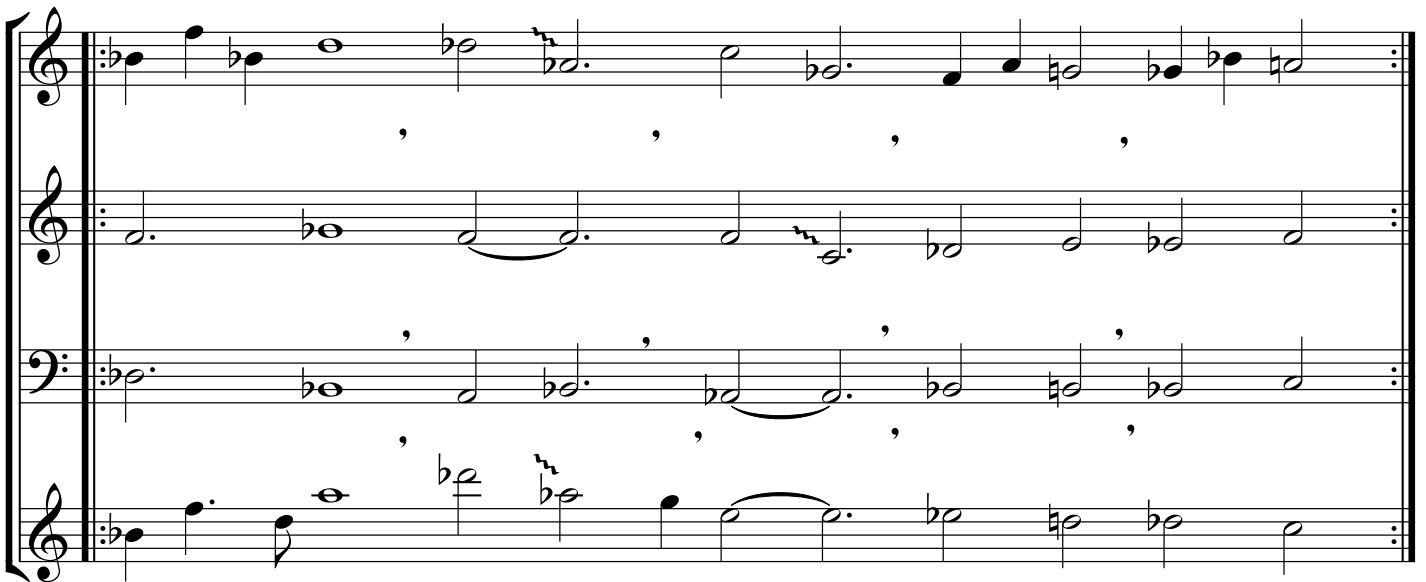
LUME Kestrel

Eb

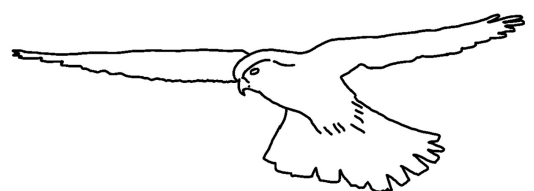
Very quiet improvisation, see how quiet you can make your sounds and still contribute.
Gradually incorporate/focus on these notes. Short, to form a collective melody.
Try to place your note(s) in sequence with someone else, without them knowing. (eg always follow Tullis)



One player decides to move on once most of the band are obviously focussing on their two pitches.
Start the melody. Play it how you feel.
Other players join the melody.
Then gradually add in the other parts one by one.
The first line is the most important one.
Feel free to improvise around the notes, but keep the line present.



Dissolve to original two note phrase (or any other consecutive two notes from above) and end.



Kestrel

FIVE

LUME Kestrel

Eb

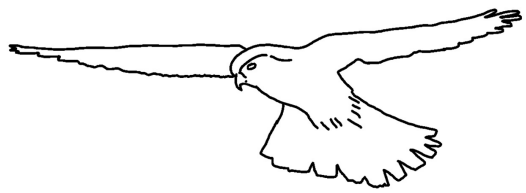
Very quiet improvisation, see how quiet you can make your sounds and still contribute.
Gradually incorporate/focus on these notes. Short, to form a collective melody.
Try to place your note(s) in sequence with someone else, without them knowing. (eg always follow Tullis)



One player decides to move on once most of the band are obviously focussing on their two pitches.
Start the melody. Play it how you feel.
Other players join the melody.
Then gradually add in the other parts one by one.
The first line is the most important one.
Feel free to improvise around the notes, but keep the line present.



Dissolve to original two note phrase (or any other consecutive two notes from above) and end.



Kestrel

SIX

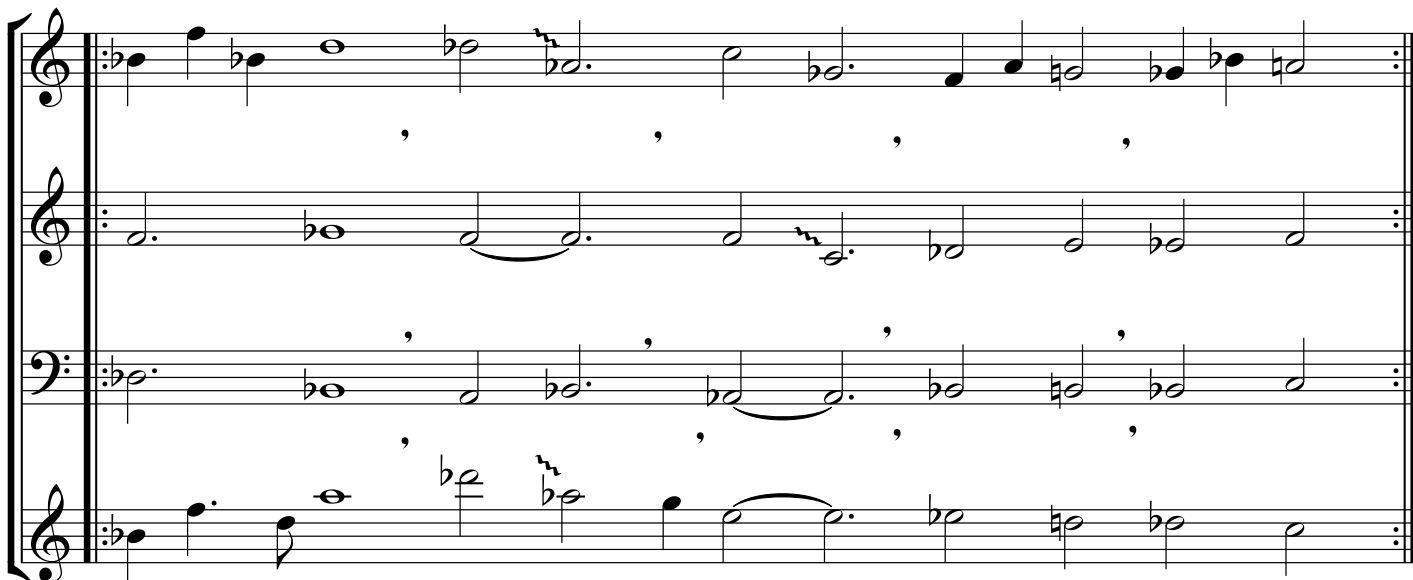
LUME Kestrel

Eb

Very quiet improvisation, see how quiet you can make your sounds and still contribute.
Gradually incorporate/focus on these notes. Short, to form a collective melody.
Try to place your note(s) in sequence with someone else, without them knowing. (eg always follow Tullis)



One player decides to move on once most of the band are obviously focussing on their two pitches.
Start the melody. Play it how you feel.
Other players join the melody.
Then gradually add in the other parts one by one.
The first line is the most important one.
Feel free to improvise around the notes, but keep the line present.



SEVEN

LUME Kestrel

Eb

Very quiet improvisation, see how quiet you can make your sounds and still contribute.
Gradually incorporate/focus on these notes. Short, to form a collective melody.
Try to place your note(s) in sequence with someone else, without them knowing. (eg always follow Tullis)



One player decides to move on once most of the band are obviously focussing on their two pitches.
Start the melody. Play it how you feel.
Other players join the melody.
Then gradually add in the other parts one by one.
The first line is the most important one.
Feel free to improvise around the notes, but keep the line present.