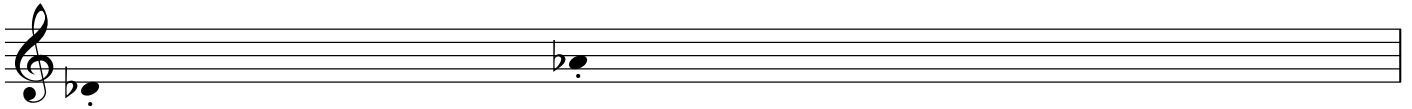


# ONE

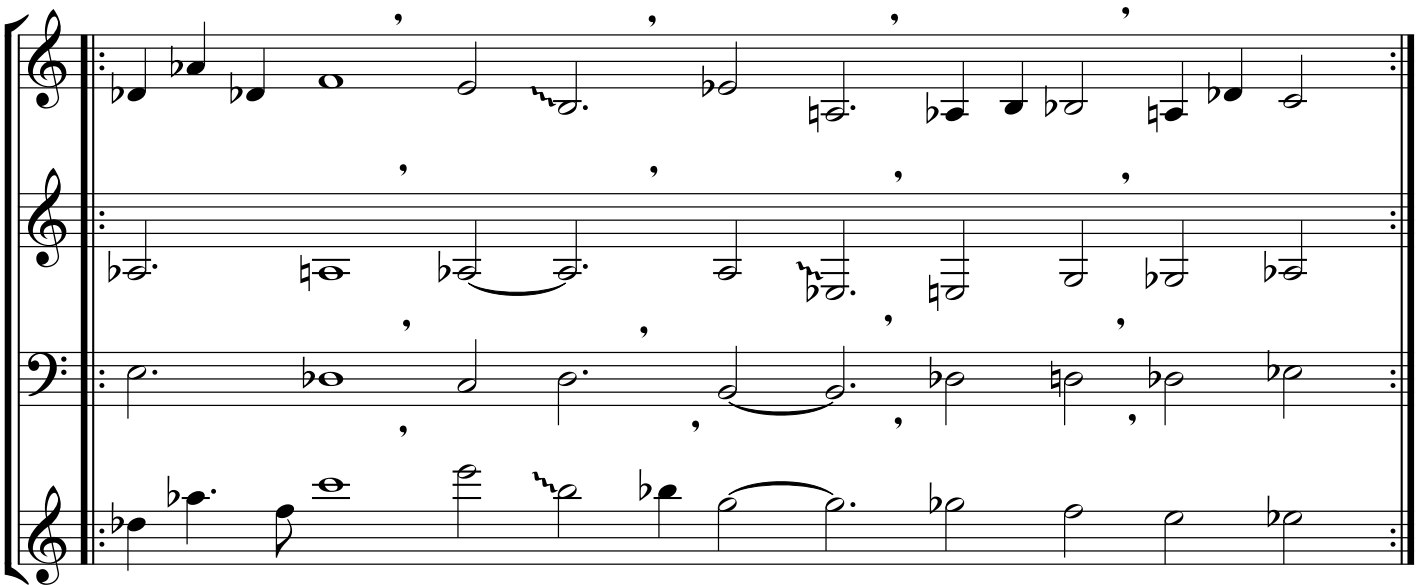
# LUME Kestrel

Concert

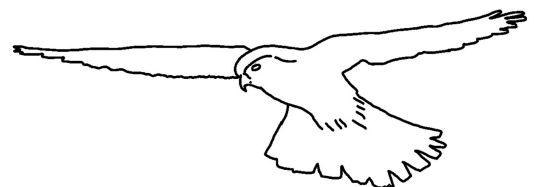
Very quiet improvisation, see how quiet you can make your sounds and still contribute.  
Gradually incorporate/focus on these notes. Short, to form a collective melody.  
Try to place your note(s) in sequence with someone else, without them knowing. (eg always follow Tullis)



One player decides to move on once most of the band are obviously focussing on their two pitches.  
Start the melody. Play it how you feel.  
Other players join the melody.  
Then gradually add in the other parts one by one.  
The first line is the most important one.  
Feel free to improvise around the notes, but keep the line present.



Dissolve to original two note phrase (or any other consecutive two notes from above) and end.



Kestrel

# TWO

# LUME Kestrel

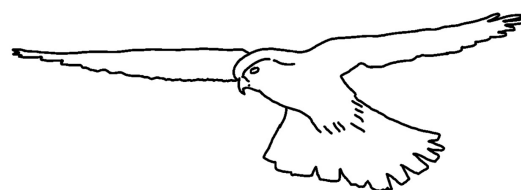
Concert

Very quiet improvisation, see how quiet you can make your sounds and still contribute.  
Gradually incorporate/focus on these notes. Short, to form a collective melody.  
Try to place your note(s) in sequence with someone else, without them knowing. (eg always follow Tullis)



One player decides to move on once most of the band are obviously focussing on their two pitches.  
Start the melody. Play it how you feel.  
Other players join the melody.  
Then gradually add in the other parts one by one.  
The first line is the most important one.  
Feel free to improvise around the notes, but keep the line present.

Dissolve to original two note phrase (or any other consecutive two notes from above) and end.



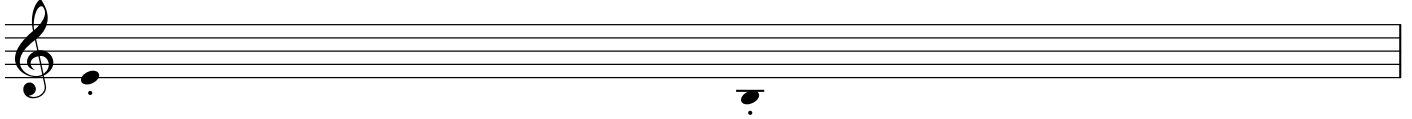
Kestrel

# THREE

# LUME Kestrel

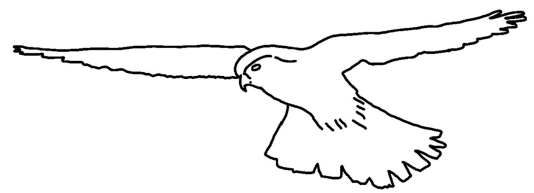
Concert

Very quiet improvisation, see how quiet you can make your sounds and still contribute.  
 Gradually incorporate/focus on these notes. Short, to form a collective melody.  
 Try to place your note(s) in sequence with someone else, without them knowing. (eg always follow Tullis)



One player decides to move on once most of the band are obviously focussing on their two pitches.  
 Start the melody. Play it how you feel.  
 Other players join the melody.  
 Then gradually add in the other parts one by one.  
 The first line is the most important one.  
 Feel free to improvise around the notes, but keep the line present.

Dissolve to original two note phrase (or any other consecutive two notes from above) and end.



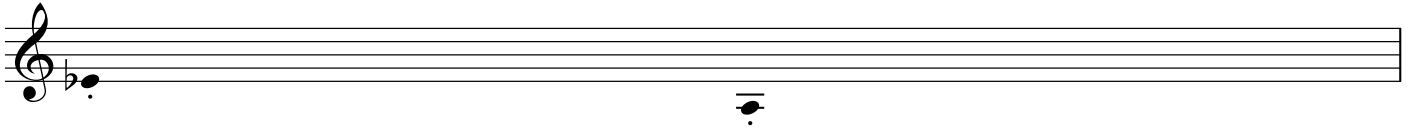
Kestrel

# FOUR

## LUME Kestrel

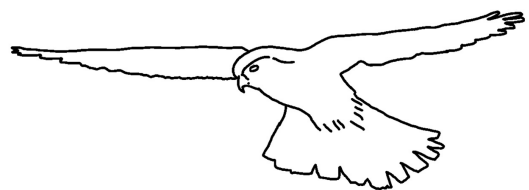
Concert

Very quiet improvisation, see how quiet you can make your sounds and still contribute.  
Gradually incorporate/focus on these notes. Short, to form a collective melody.  
Try to place your note(s) in sequence with someone else, without them knowing. (eg always follow Tullis)



One player decides to move on once most of the band are obviously focussing on their two pitches.  
Start the melody. Play it how you feel.  
Other players join the melody.  
Then gradually add in the other parts one by one.  
The first line is the most important one.  
Feel free to improvise around the notes, but keep the line present.

Dissolve to original two note phrase (or any other consecutive two notes from above) and end.



Kestrel

# FIVE

# LUME Kestrel

Concert

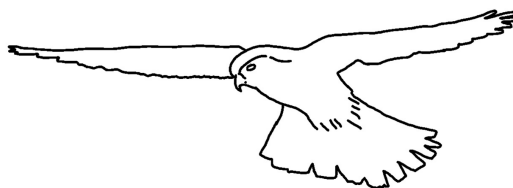
Very quiet improvisation, see how quiet you can make your sounds and still contribute.  
Gradually incorporate/focus on these notes. Short, to form a collective melody.  
Try to place your note(s) in sequence with someone else, without them knowing. (eg always follow Tullis)



One player decides to move on once most of the band are obviously focussing on their two pitches.  
Start the melody. Play it how you feel.  
Other players join the melody.  
Then gradually add in the other parts one by one.  
The first line is the most important one.  
Feel free to improvise around the notes, but keep the line present.

A musical score consisting of four staves. The top staff is in treble clef with a key signature of one flat. The second and fourth staves are also in treble clef, while the third staff is in bass clef. The score contains various musical notations including notes, rests, and accidentals. Above the staves, there are vertical lines and commas indicating improvisation points. The score is enclosed in a large rectangular frame.

Dissolve to original two note phrase (or any other consecutive two notes from above) and end.



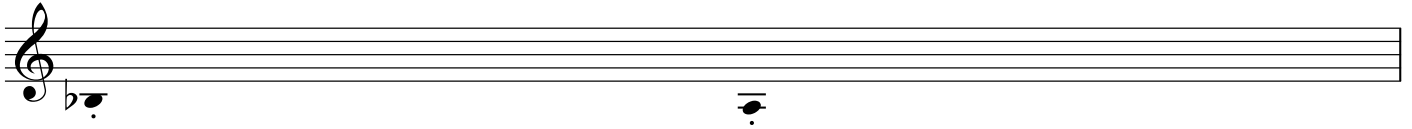
Kestrel

# SIX

# LUME Kestrel

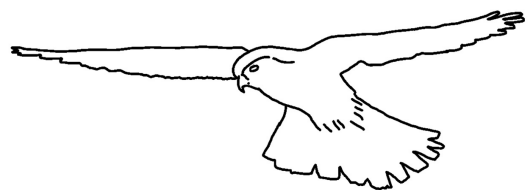
Concert

Very quiet improvisation, see how quiet you can make your sounds and still contribute.  
Gradually incorporate/focus on these notes. Short, to form a collective melody.  
Try to place your note(s) in sequence with someone else, without them knowing. (eg always follow Tullis)



One player decides to move on once most of the band are obviously focussing on their two pitches.  
Start the melody. Play it how you feel.  
Other players join the melody.  
Then gradually add in the other parts one by one.  
The first line is the most important one.  
Feel free to improvise around the notes, but keep the line present.

Dissolve to original two note phrase (or any other consecutive two notes from above) and end.



Kestrel

# SEVEN

# LUME Kestrel

Concert

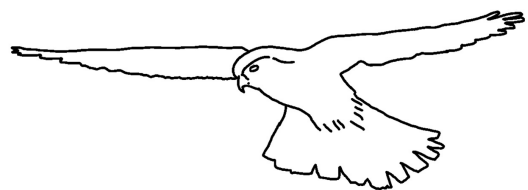
Very quiet improvisation, see how quiet you can make your sounds and still contribute.  
Gradually incorporate/focus on these notes. Short, to form a collective melody.  
Try to place your note(s) in sequence with someone else, without them knowing. (eg always follow Tullis)



One player decides to move on once most of the band are obviously focussing on their two pitches.  
Start the melody. Play it how you feel.  
Other players join the melody.  
Then gradually add in the other parts one by one.  
The first line is the most important one.  
Feel free to improvise around the notes, but keep the line present.



Dissolve to original two note phrase (or any other consecutive two notes from above) and end.



Kestrel