

ONE

LUME Kestrel

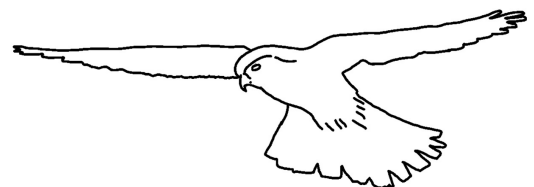
Bb

Very quiet improvisation, see how quiet you can make your sounds and still contribute.
Gradually incorporate/focus on these notes. Short, to form a collective melody.
Try to place your note(s) in sequence with someone else, without them knowing. (eg always follow Tullis)



One player decides to move on once most of the band are obviously focussing on their two pitches.
Start the melody. Play it how you feel.
Other players join the melody.
Then gradually add in the other parts one by one.
The first line is the most important one.
Feel free to improvise around the notes, but keep the line present.

Dissolve to original two note phrase (or any other consecutive two notes from above) and end.



Kestrel

TWO

LUME Kestrel

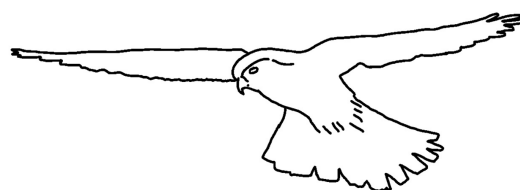
Bb

Very quiet improvisation, see how quiet you can make your sounds and still contribute.
Gradually incorporate/focus on these notes. Short, to form a collective melody.
Try to place your note(s) in sequence with someone else, without them knowing. (eg always follow Tullis)



One player decides to move on once most of the band are obviously focussing on their two pitches.
Start the melody. Play it how you feel.
Other players join the melody.
Then gradually add in the other parts one by one.
The first line is the most important one.
Feel free to improvise around the notes, but keep the line present.

Dissolve to original two note phrase (or any other consecutive two notes from above) and end.



Kestrel

THREE

LUME Kestrel

Bb

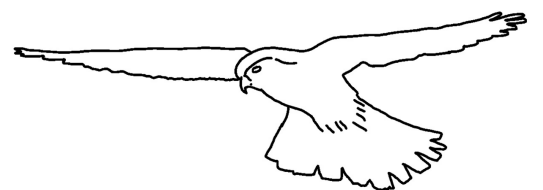
Very quiet improvisation, see how quiet you can make your sounds and still contribute.
Gradually incorporate/focus on these notes. Short, to form a collective melody.
Try to place your note(s) in sequence with someone else, without them knowing. (eg always follow Tullis)



One player decides to move on once most of the band are obviously focussing on their two pitches.
Start the melody. Play it how you feel.
Other players join the melody.
Then gradually add in the other parts one by one.
The first line is the most important one.
Feel free to improvise around the notes, but keep the line present.



Dissolve to original two note phrase (or any other consecutive two notes from above) and end.



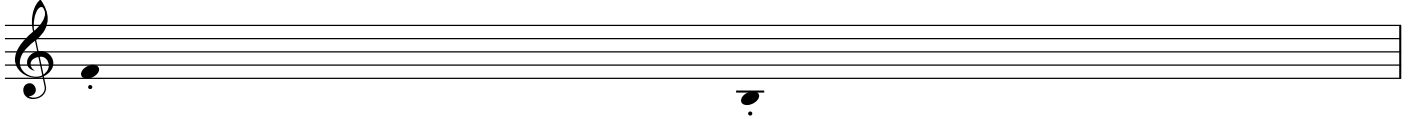
Kestrel

FOUR

LUME Kestrel

Bb

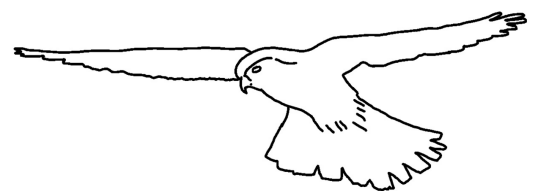
Very quiet improvisation, see how quiet you can make your sounds and still contribute.
Gradually incorporate/focus on these notes. Short, to form a collective melody.
Try to place your note(s) in sequence with someone else, without them knowing. (eg always follow Tullis)



One player decides to move on once most of the band are obviously focussing on their two pitches.
Start the melody. Play it how you feel.
Other players join the melody.
Then gradually add in the other parts one by one.
The first line is the most important one.
Feel free to improvise around the notes, but keep the line present.



Dissolve to original two note phrase (or any other consecutive two notes from above) and end.



Kestrel

FIVE

LUME Kestrel

Bb

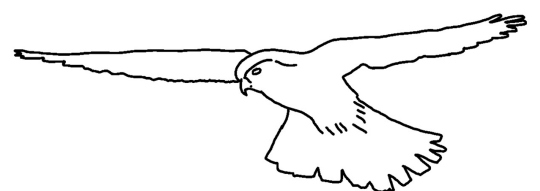
Very quiet improvisation, see how quiet you can make your sounds and still contribute.
Gradually incorporate/focus on these notes. Short, to form a collective melody.
Try to place your note(s) in sequence with someone else, without them knowing. (eg always follow Tullis)



One player decides to move on once most of the band are obviously focussing on their two pitches.
Start the melody. Play it how you feel.
Other players join the melody.
Then gradually add in the other parts one by one.
The first line is the most important one.
Feel free to improvise around the notes, but keep the line present.



Dissolve to original two note phrase (or any other consecutive two notes from above) and end.



Kestrel

SIX

LUME Kestrel

Bb

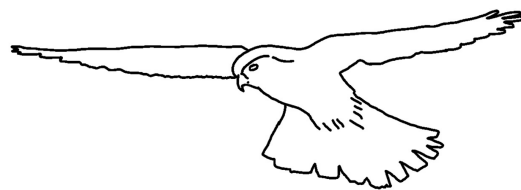
Very quiet improvisation, see how quiet you can make your sounds and still contribute.
Gradually incorporate/focus on these notes. Short, to form a collective melody.
Try to place your note(s) in sequence with someone else, without them knowing. (eg always follow Tullis)



One player decides to move on once most of the band are obviously focussing on their two pitches.
Start the melody. Play it how you feel.
Other players join the melody.
Then gradually add in the other parts one by one.
The first line is the most important one.
Feel free to improvise around the notes, but keep the line present.



Dissolve to original two note phrase (or any other consecutive two notes from above) and end.



Kestrel

SEVEN

LUME Kestrel

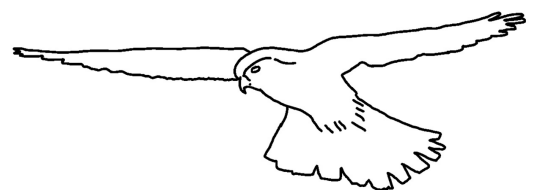
Bb

Very quiet improvisation, see how quiet you can make your sounds and still contribute.
Gradually incorporate/focus on these notes. Short, to form a collective melody.
Try to place your note(s) in sequence with someone else, without them knowing. (eg always follow Tullis)



One player decides to move on once most of the band are obviously focussing on their two pitches.
Start the melody. Play it how you feel.
Other players join the melody.
Then gradually add in the other parts one by one.
The first line is the most important one.
Feel free to improvise around the notes, but keep the line present.

Dissolve to original two note phrase (or any other consecutive two notes from above) and end.



Kestrel